

Auckland Transition Agency Discussion Document on Local Boards

12 March 2010

- Legislation in place establishing Local Boards
- For first Auckland Council ATA decides Board roles
- Have issued a discussion paper seeking “feedback”
- Due 5pm 26 March 2010

The diagram below shows the structure of Auckland Council.

- Auckland Council has 2 decision making parts:
 - Governing Body
 - 21 Local Boards
- Boards “represent local communities” and “make decisions on local issues”



Auckland Council will be advised by an independent board for mana whenua and Maori of Tamaki Makaurau. The board must appoint a maximum of two persons to sit on each of Auckland Council's committees that deal with the management and stewardship of natural and physical resource. Auckland Council will also be advised by a Pacific peoples advisory panel and an ethnic advisory panel.



Legend
 --- Boundary 1:10k
 --- Actual Road 2:10k
 --- Major Road
 --- Public Open Space

Waitakere Ranges Local Board

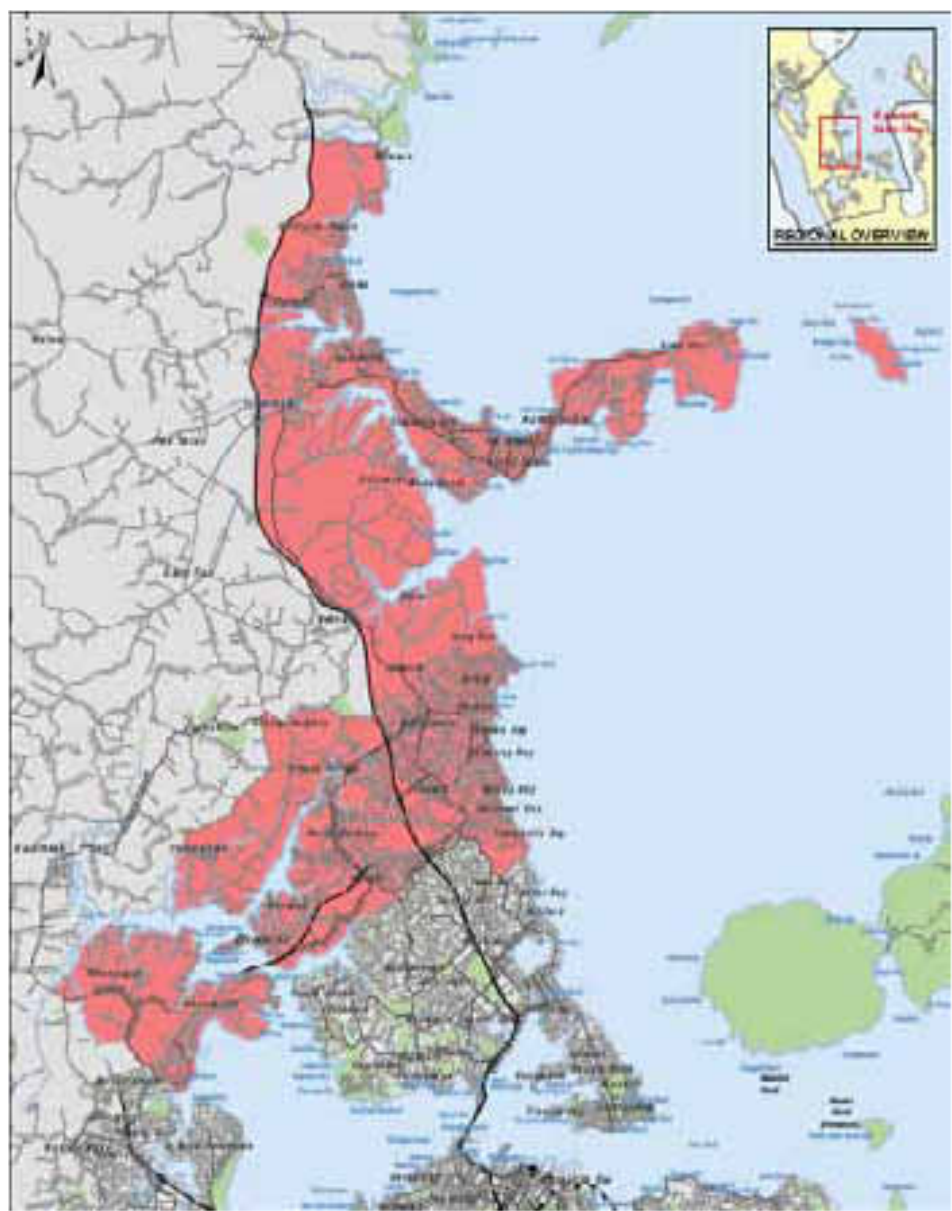
1:10,000



Legend
 --- Boundary 1:10k
 --- Actual Road 2:10k
 --- Major Road
 --- Public Open Space

Whau Local Board

1:10,000



Legend

Arterial Road	Public Open Space
Major Road	Water
Minor Road	Other

Henderson - Massey Local Board

- 2 Councillors elected from Ward to Governing Body



- Applied the principle that
 - “decision making for all non-regulatory activities should be undertaken by local boards unless a regional approach would better promote the wellbeing of Auckland communities”
- Regulatory activities are a decision of the new Council but some thoughts are in the discussion document
- Approach of ATA proposal
 - “Rather than ask *why should local boards undertake certain activities* , the ATA have asked *why not?*”
- Auckland Council must adopt a funding policy and formula for 2012 LTCCP Until then
 - “ the budgets and funding policies and mechanisms in the existing Council’s 2009-19 LTCCPs will largely determine the funding allocated to meet the costs of local activities in each local board area.”

Boards

- “oversee”
 - Local facilities
 - Local programmes and activities
 - Local services
- “develop and reflect the distinct characteristics and needs of their local communities”
- provide input into the development of regional strategies, policies, plans and projects

- CCOs
 - Legislation already in place for Transport, Water and Waterfront development
 - Cabinet has already agreed in principle to the following
 - Events, Economic Dev Tourism
 - Regional Facilities
 - Property
 - Investments
 - ATA Discussion document on these CCOs has also been released with same response timeframe
 - Local Boards will “need a direct relationship”
- Maori Board and Ethnic and Pacific Panels
- Mayors Office

- Manager : Local board Services
- Proposed for a dedicated team to provide:
 - Strategic and policy advice
 - Consultation support
 - Administrative support
- Other advice and support will be drawn from across the organisation

- 3 Yearly Local board plan
 - Includes variation to service standards and costs of these
 - budget including how costs will be met
- Annual Local board agreement
 - Must be included in LTCCP
 - First in 2011 for 2011/12
- Annual report and monitoring
 - Boards must monitor implementation of the Agreement
 - Must be reported in Annual report for each area and must include service levels report

Feedback due 5pm 26 March 2010

http://www.ata.govt.nz/web/cms_ata.nsf

<http://www.discussiondocuments.co.nz/>

